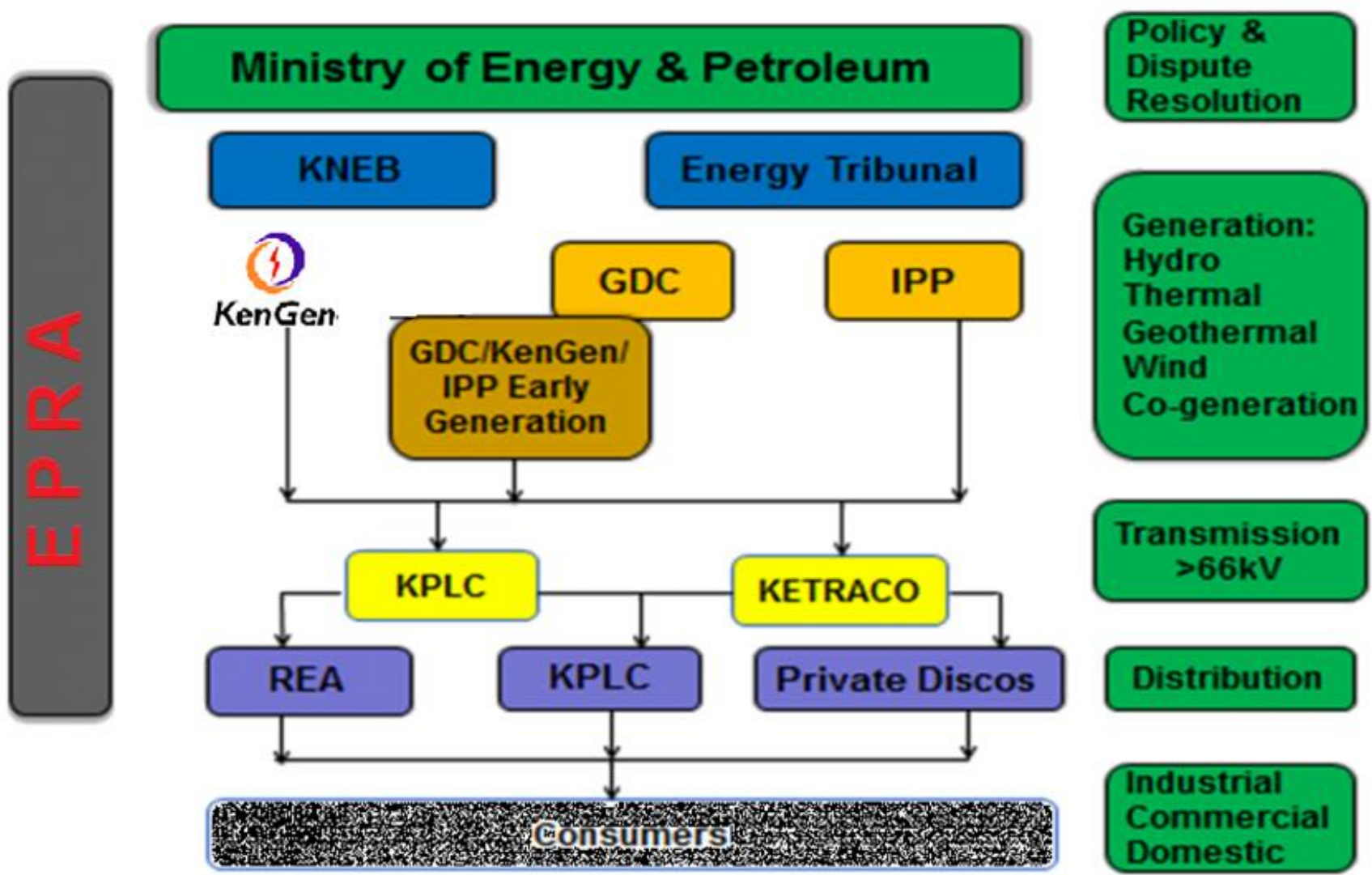


Emergency Management



CASE OF KENGEN FIRST AIDERS

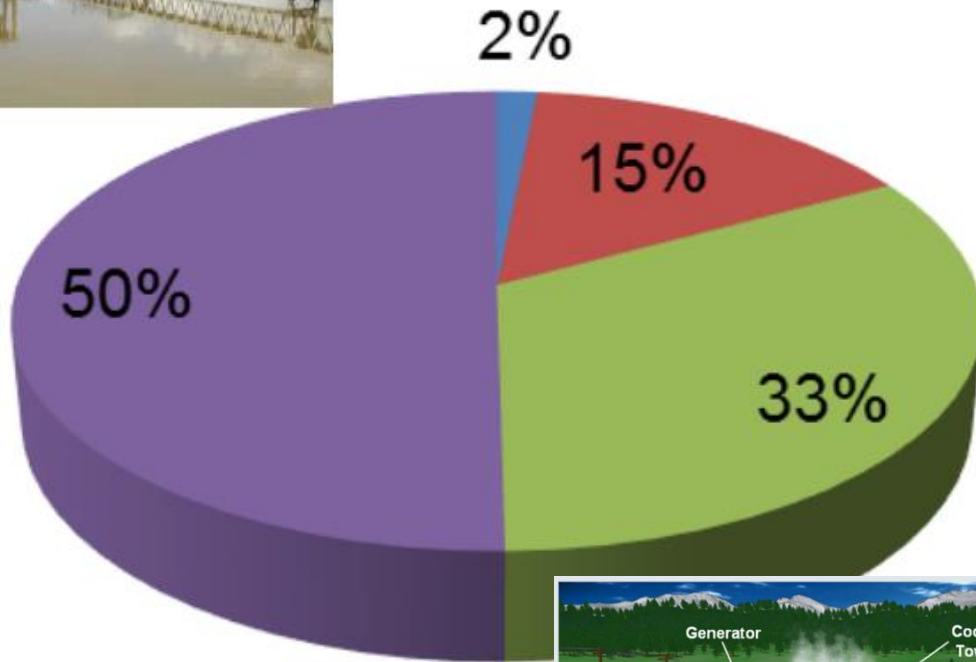
Introduction



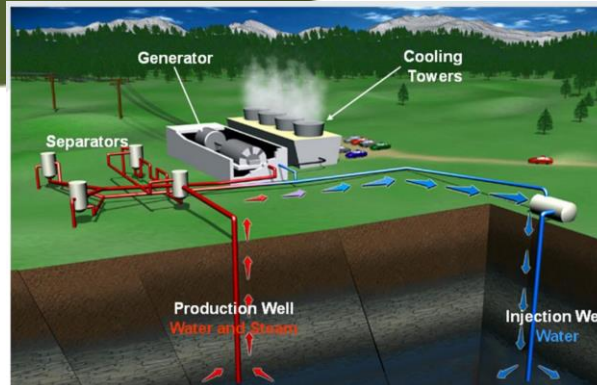
Modes of power generation



KenGen's Energy Mix

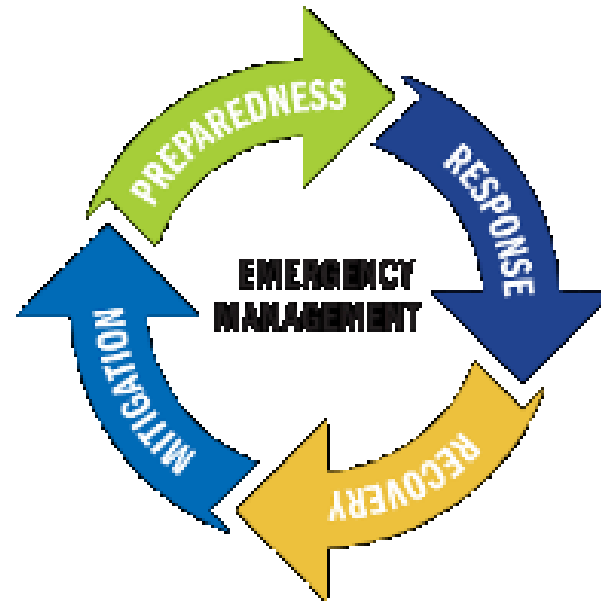


- Wind
- Thermal
- Geothermal
- Hydro



Introduction: Emergency Management

Emergency Management is a coordinated effort, involving local, state and national government agencies as well as volunteer organizations and businesses to respond to an unprecedented situation that may end up being a **disaster** if not well managed.



Disaster and Crisis

- **Emergency** is a sudden and usually unforeseen event that calls for immediate measure to minimize its adverse consequences to causing body injury, harm, death and disruption of normal activity.
- A **Disaster** is a sudden unplanned event that causes great damage or serious loss to an organization. It results in an organization failing to provide critical business functions for some predetermined minimum period of time
- A **crisis** is a situation faced by an individual, group or organisation which they are unable to cope with by the use of normal routine procedure and which stress is created by sudden change





Capacity for self-organisation



Effective communication



Understanding risks & uncertainty



Developing flexibility

COMMUNITY DISASTER RESILIENCE



Use of local knowledge & resources



Collaboration between stakeholders



Preparation engagement



Empowerment



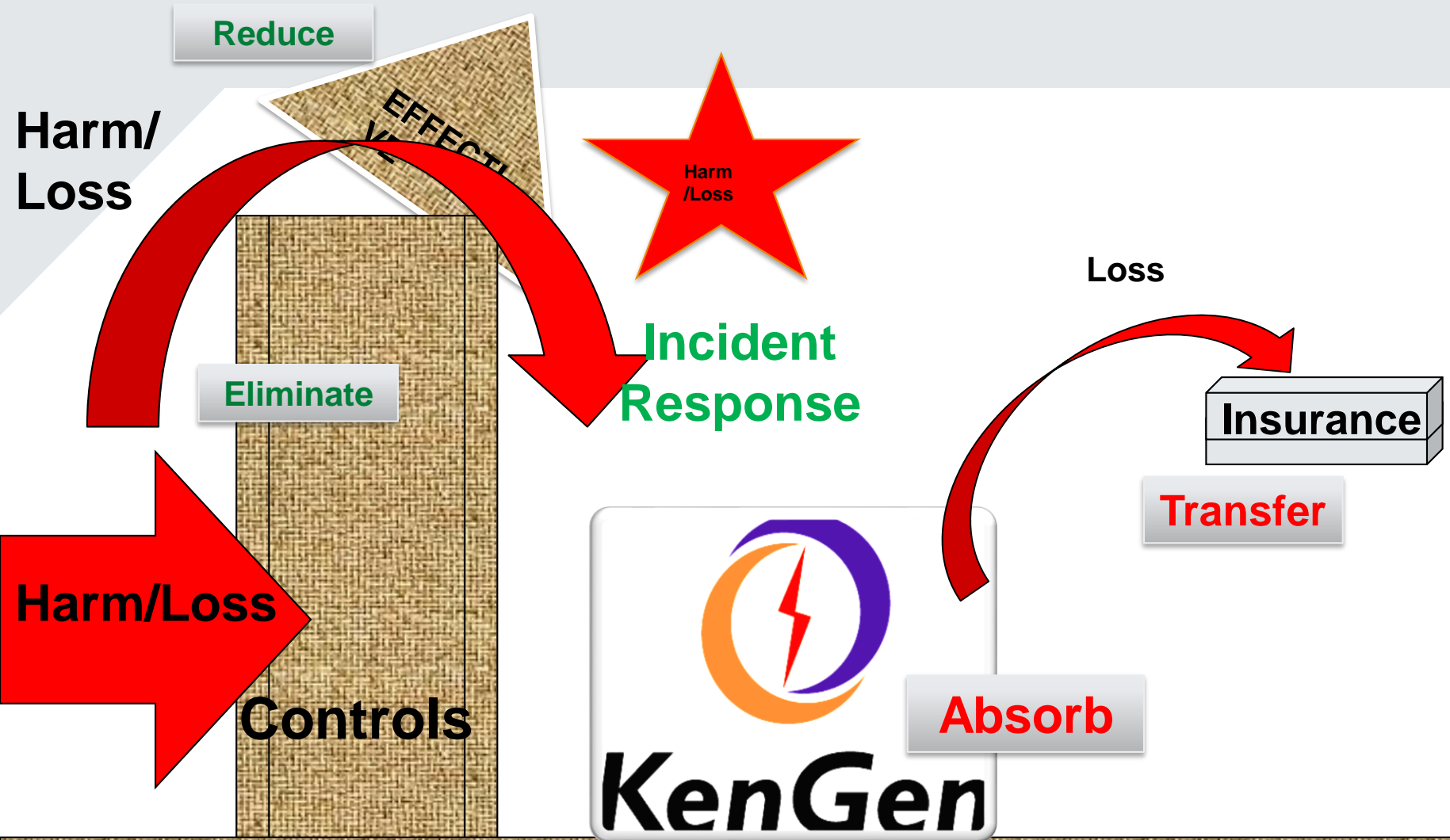
Social connectedness

Risks and Impacts

Faces Organizational
Risks- Areas of
Harm/loss

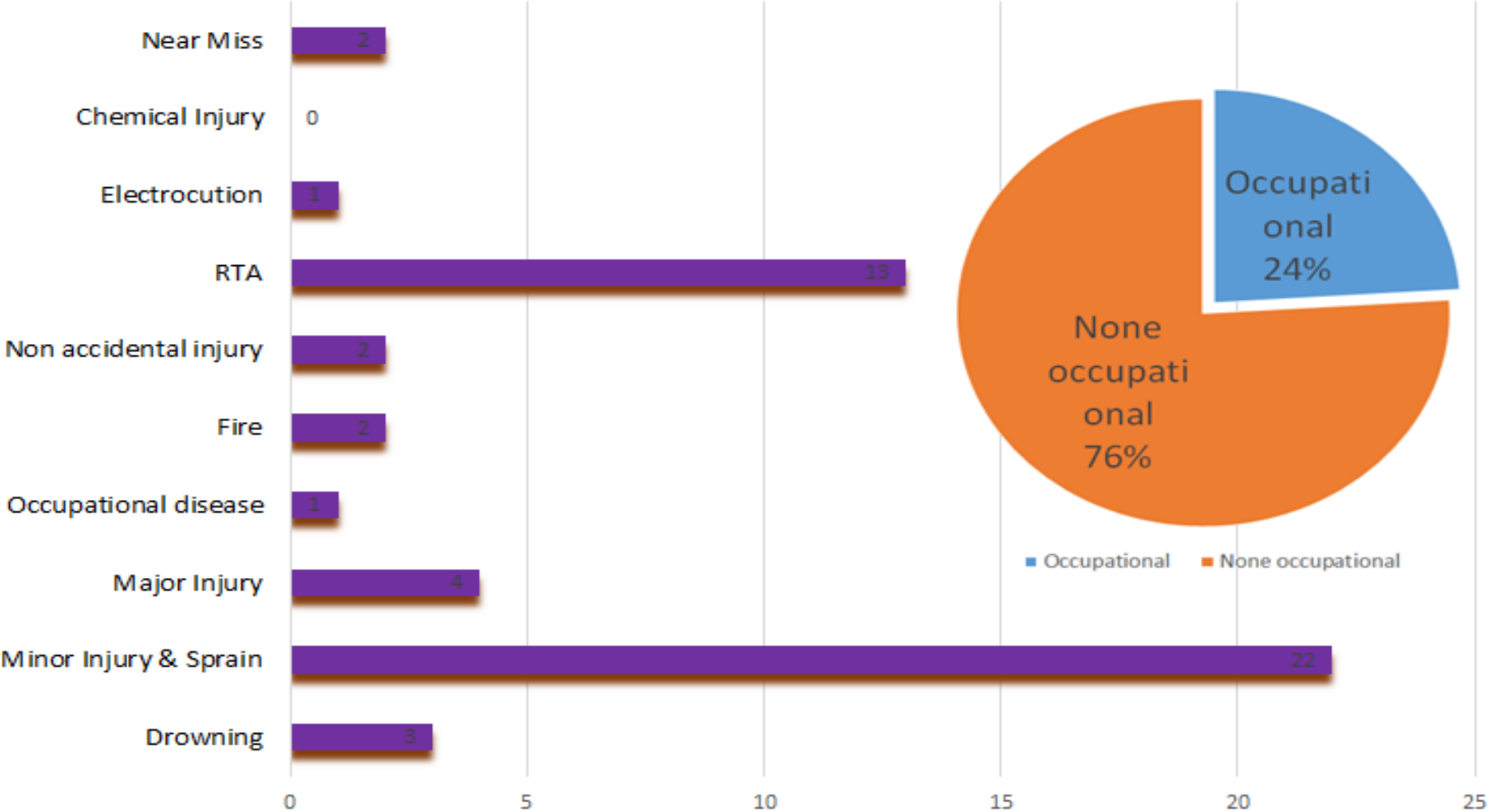


Risk Management in KenGen- focus on Controls



Experience: Most incidents happen outside workplace

Incident Monitoring in 44 workplaces, 5million Man-hours



When Disaster strikes



Kisii

Time-critical Business activities/processes are primary concern during disaster situations

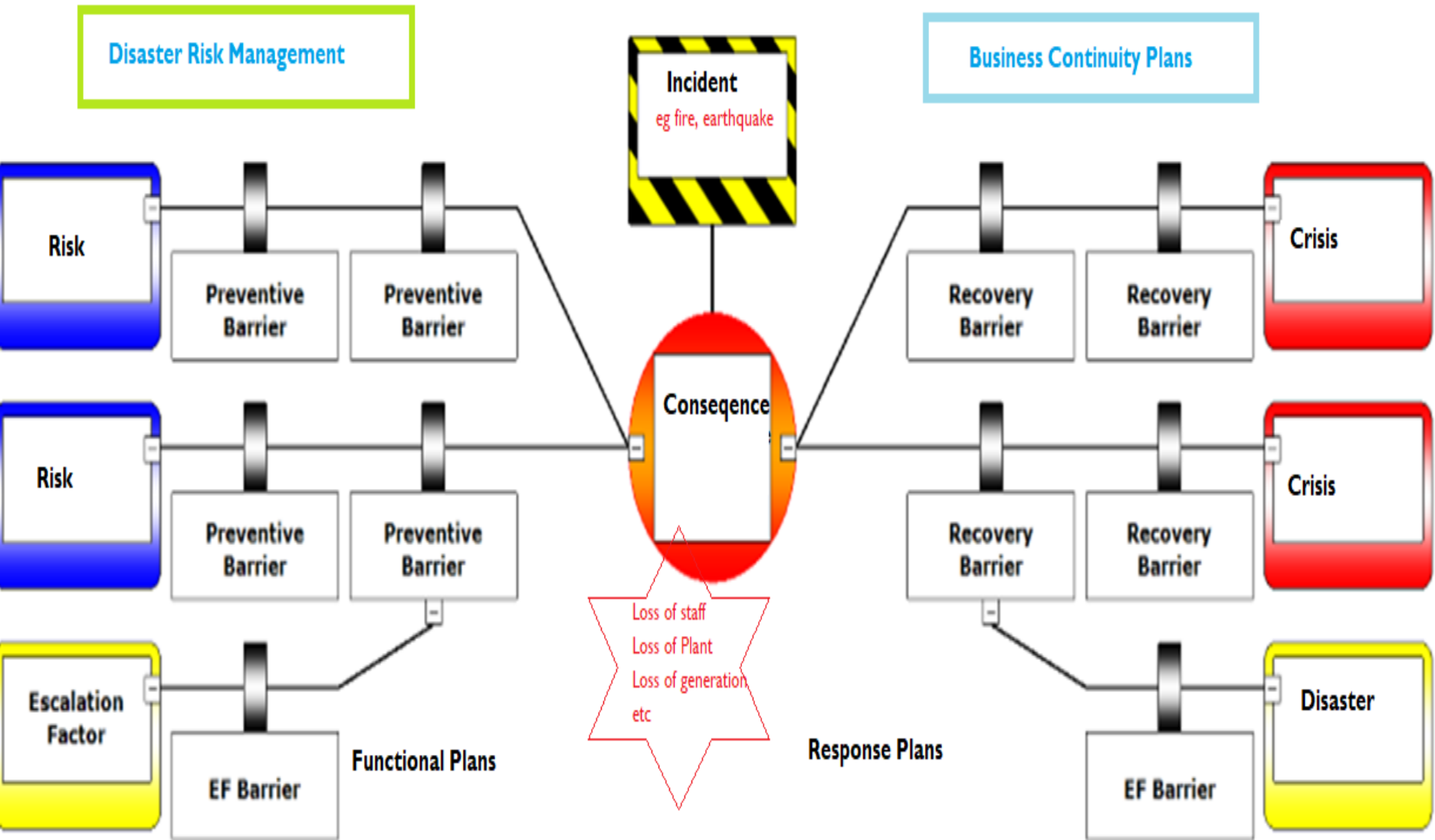
**No
matter
when**

- Ensure people well being & provision of information
- Generation of electrical energy safely, securely, etc
- Billing information as per regulator

**At
certain
time**

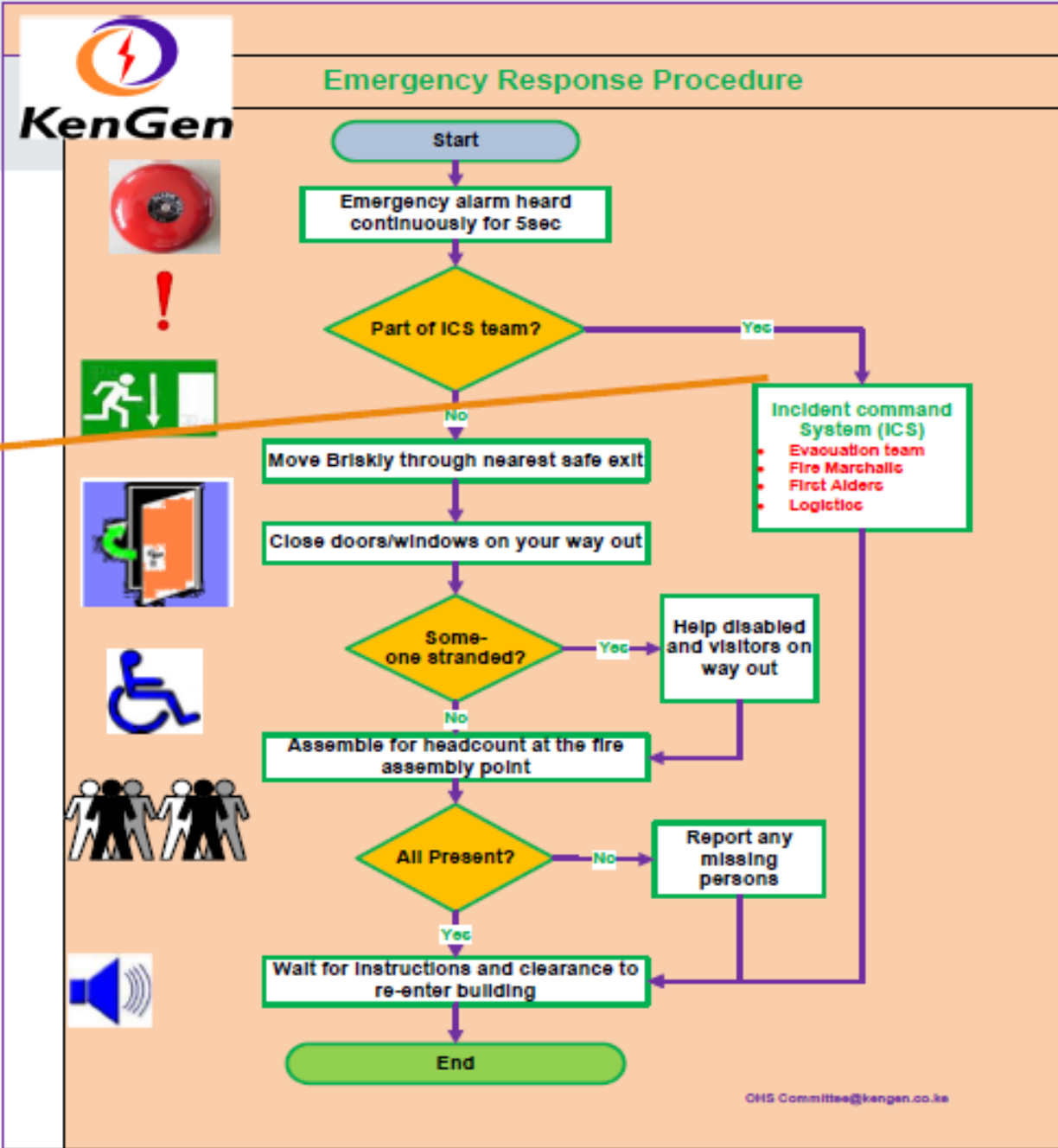
- Project deadlines
- Welfare of staff- salaries
- Financial obligations- insurance etc

DRM/BCP approach



Emergency response Procedure for All staff

Note:
Incident command Team have a bigger Role



First aiders

Area	No of persons
Kipevu	23
WR Sondu& Turkwel	42
Central Office	60
Geothermal	193
ER - Seven Forks	78
Upper Tana	25
	421



Organisational Challenges

- **Training by different service providers**
 - ✓ Different approaches- discontinuity
 - ✓ First Aid skills lapses.
 - ✓ Certification delay
- **Emerging trends**
 - ✓ Continuously disconnected international best practices.
- **Cost**
 - ✓ Time and Money- First Aid budget allocation.
 - ✓ Reactive controls- after incident
- **Career Growth**
- **Partnership with community**

Partnership

St John
Ambulance

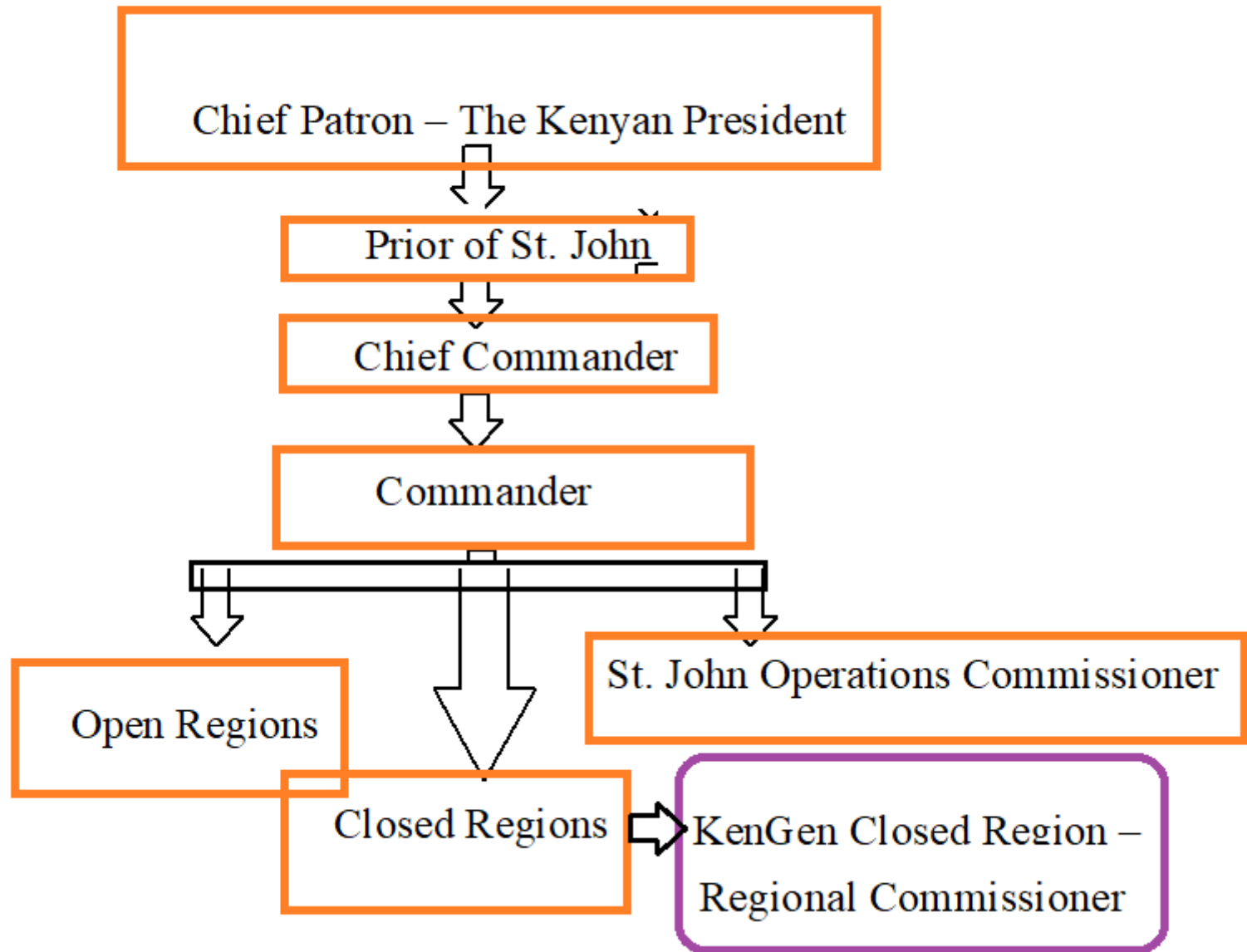


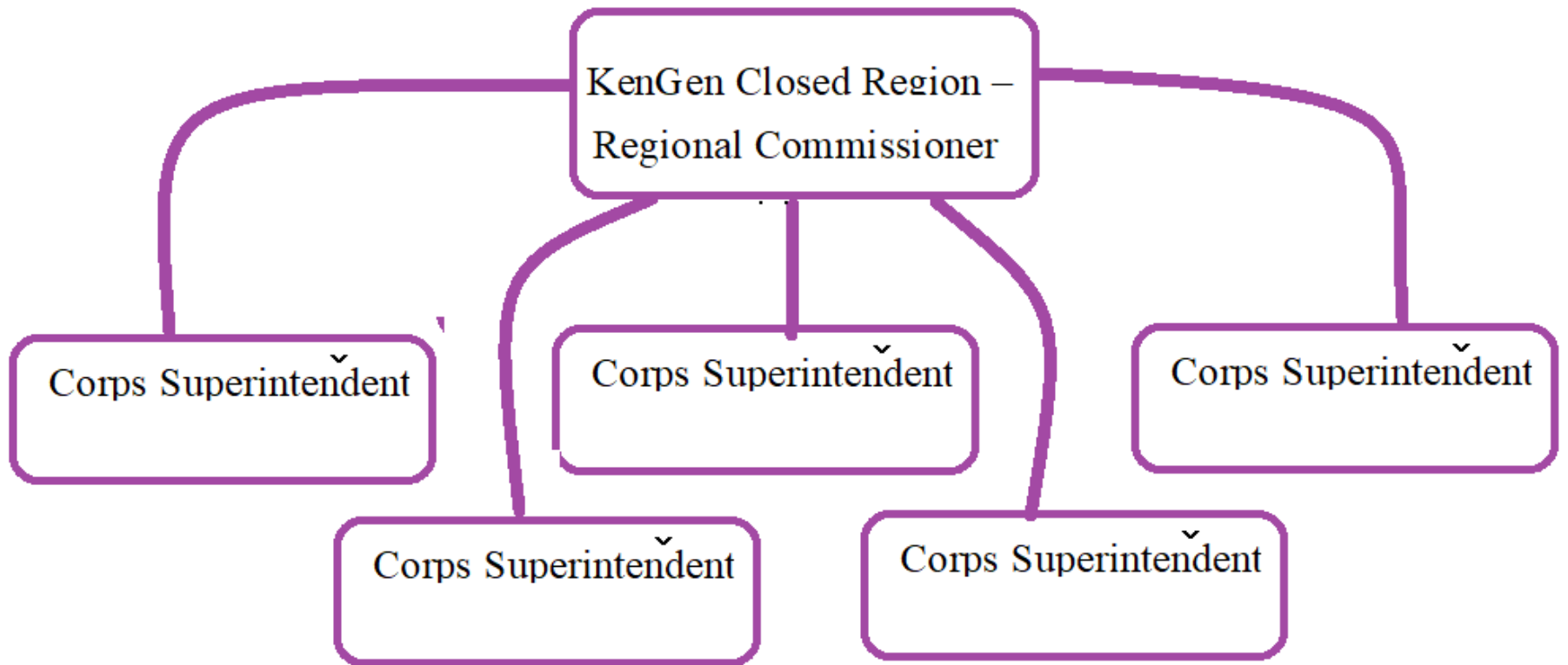
First Aiders of Kipevu Power plant

- **Kipevu I developed a relationship with St. John Ambulance in 2011.**
- **This relationship has grown over the years and established a strong base in First Aid emergency response team.**
- **This relationship prompted the Kipevu team to show case the benefits of partnership in a G2G Technical Seminar in 2016.**
- **The Management made a decision to pursue a path that has career growth beyond the workplace**

First Aiders of Kipevu Power plant







Road map

Phase I

- ✓ Membership level program: Training of first aiders
- ✓ Corporate level program.
- ✓ Participation in competitions

Phase II

- ✓ Leadership training
- ✓ Training of Trainers
- ✓ First aid training
- ✓ Incident command system
- ✓ Internal first aid competitions

Phase II

- ✓ Regular programs including first aid competitions, TOT trainings, workshops, First Aid Refresher & Inductions Training...

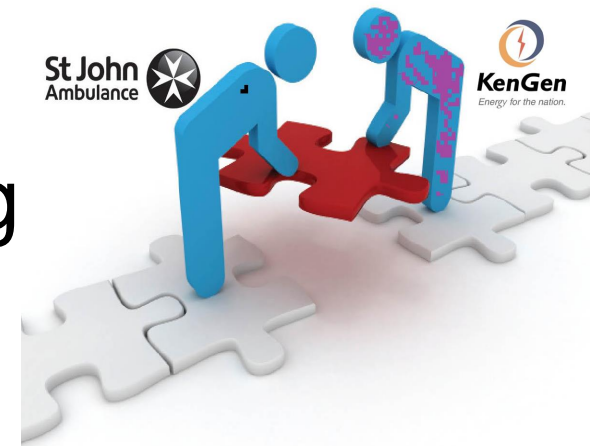
Options

- ✓ Cadet training (young officers of age 11-17 yrs – KenGen Employees children)
- ✓ Dolphin training (young officers of age 6-11 yrs – KenGen Employees children)
- ✓ Fire Drill training.
- ✓ Partnership in medical camps



Benefits of Partnership

- Skills transfer
- **Competent emergency responders-
(accredited)**
- Confidence of our team
- **Participation in National operations**
- TOT programs
- **Paramedic trainings**
- Ambulance and rescue training
- **Membership in above groups**
- Corporate Membership



CONCLUSION

What works for us

- *Top management support*
- *Need based- operations require the skills*
- *Past experience- successful stories*
- *Support of workers and buy in*
- *Professionalism- Staff demand for quality services*
- *WHI-FM factor- first aid is personal*



Kipevu First Aiders at National Competition



Kipevu First Aiders in St John's National Competitions practical paper in Nairobi

Competent and confident First Aiders



Kipevu First Aiders in St John's National competitions Theory paper in Nairobi



2017



St John's National competitions : **Second Best Overall Winners**





Done!



Safety begins with attitude

Patrick Gikunju MEIK, MIIRSM
EIA/EA Lead Expert and OSH Advisor
MSc OSH-[JKUAT], BTech [MU], Dip PM [KIM]